

**Title:** SigmaWin+ Version 7 Usage Notes

**Product(s):** SigmaWin+ Version 7.42

**Doc. No.** SigmaWinPlus\_Ver.7

## About This Document

This document provides information related to the installation and usage Yaskawa's SERVOPACK Engineering Tool SigmaWin+ version 7.42 for Sigma-series AC SERVOPACKs. Read and understand this document to ensure the correct usage of SigmaWin+.

### Contents

1. System Requirements .....	2
2. Upgrading Information .....	3
3. Installation Instructions .....	4
4. Additional Installation Notes .....	5
5. Release Notes .....	6
6. Installation Troubleshooting.....	8
7. Program Launch Troubleshooting .....	10
8. Program Usage Troubleshooting .....	14

**Title:** SigmaWin+ Version 7 Usage Notes

**Product(s):** SigmaWin+ Version 7.42

**Doc. No.** SigmaWinPlus\_Ver.7

## 1. System Requirements

The computer to install and use SigmaWin+ requires the following specifications.

Specification	Requirement
Operating System	Microsoft Windows 7 SP1* <sup>1</sup> 64-bit / 32-bit Windows 8.1* <sup>1*2</sup> 64-bit / 32-bit Windows 10 64-bit / 32-bit Windows 11 64-bit
Processor	1 GHz or better
RAM	1 GB or more
Hard Drive Space	1 GB or more
Display	1280 × 720 (minimum)
Language	English, Chinese (Simplified Chinese), Japanese
Software	.NET Framework 4.6.2 or later (included in SigmaWin+ compressed archive as NDP462-KB3151800-x86-x64-AllOS-ENU.exe)
	Internet browser that supports HTML5 (For example: Microsoft Internet Explorer 9)

\*1 KB2999226 (Update for Universal C Runtime) must be installed.

\*2 KB2919442 and KB2919355 must also be installed in order to install KB2999226.

Software	URL
KB2919442	<a href="https://support.microsoft.com/en-us/help/2919442/march-2014-servicing-stack-update-for-windows-8-1-and-windows-server-2">https://support.microsoft.com/en-us/help/2919442/march-2014-servicing-stack-update-for-windows-8-1-and-windows-server-2</a>
KB2919355	<a href="https://support.microsoft.com/en-us/help/2919355/windows-rt-8-1--windows-8-1--and-windows-server-2012-r2-update-april-2">https://support.microsoft.com/en-us/help/2919355/windows-rt-8-1--windows-8-1--and-windows-server-2012-r2-update-april-2</a>
KB2999226	<a href="https://support.microsoft.com/en-us/help/2999226/update-for-universal-c-runtime-in-windows">https://support.microsoft.com/en-us/help/2999226/update-for-universal-c-runtime-in-windows</a>

**Title:** SigmaWin+ Version 7 Usage Notes

**Product(s):** SigmaWin+ Version 7.42

**Doc. No.** SigmaWinPlus\_Ver.7

## 2. Upgrading Information

The below information describes the change of computer requirements in order to use this version of SigmaWin+.

1. .NET Framework Requirement Change
  - a. SigmaWin+ Version 7.23 to 7.26 required Microsoft .NET framework 4.5.2 or 4.6.
  - b. SigmaWin+ Version 7.27 and newer requires Microsoft .NET framework 4.6.2.

**Title:** SigmaWin+ Version 7 Usage Notes

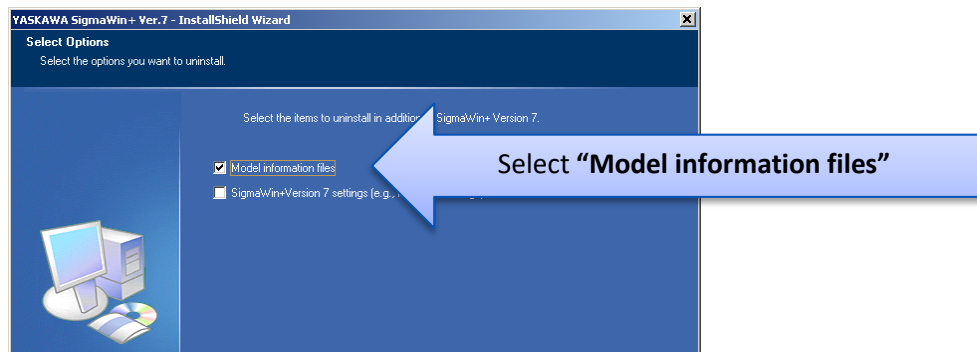
**Product(s):** SigmaWin+ Version 7.42

**Doc. No.** SigmaWinPlus\_Ver.7

### 3. Installation Instructions

Below are the steps to follow to install SigmaWin+.

1. Confirm that the computer meets the system requirements defined in [1. System Requirements](#).
2. If a previous version of SigmaWin+ version 7 exists, then uninstall it.
  - Note: SigmaWin+ version 5 can coexist with SigmaWin+ version 7. SigmaWin+ version 5 does not need to be uninstalled.
  - When uninstalling, when prompted to “Select the items to uninstall in addition to SigmaWin+ Version 7”, always select “**Model information files**”



3. Extract the entire contents, maintaining the directory structure, of the SigmaWin+ compressed archive (\*.zip file).
4. If not already installed, run and install .NET framework 4.6.2 **NDP462-KB3151800-x86-x64-AIIOS-ENU.exe**. This is included in the SigmaWin+ compressed archive.
  - Note: If SigmaWin+ is installed to PC without installing .NET Framework to it, errors may occur and SigmaWin+ will not be installed.
  - Note: .NET Framework is produced by Microsoft. For details, refer to the following:

Item	URL
.NET Framework Details	<a href="https://www.microsoft.com/en-us/download/details.aspx?id=53344">https://www.microsoft.com/en-us/download/details.aspx?id=53344</a>
.NET Framework Versions and Dependencies	<a href="https://msdn.microsoft.com/en-us/library/bb822049(v=vs.110).aspx">https://msdn.microsoft.com/en-us/library/bb822049(v=vs.110).aspx</a>
.NET Framework System Requirements	<a href="https://msdn.microsoft.com/en-us/library/8z6watww(v=vs.110).aspx">https://msdn.microsoft.com/en-us/library/8z6watww(v=vs.110).aspx</a>

5. Run and install **SigmaWinPlus7\_installer.exe** from the extracted SigmaWin+ archive.

**Title:** SigmaWin+ Version 7 Usage Notes**Product(s):** SigmaWin+ Version 7.42**Doc. No.** SigmaWinPlus\_Ver.7

#### 4. Additional Installation Notes

Below are notes related to the installation of SigmaWin+

The following programs are installed if a newer version does not already exist on the computer:

Name	Publisher	Size	Version
Microsoft Access database engine 2010 (English)	Microsoft Corporation	108 MB	14.0.7015.1000
Microsoft Primary Interoperability Assemblies 2005	Microsoft Corporation	7.75 MB	9.0.21022

Note: Uninstalling SigmaWin+ does not uninstall these programs.

## Title: SigmaWin+ Version 7 Usage Notes

**Product(s):** SigmaWin+ Version 7.42

**Doc. No.** SigmaWinPlus\_Ver.7

### 5. Release Notes

Note: Previous release notes are found at:

<Directory of extracted SigmaWin+ .zip archive>\Previous Release Notes\

Refer to the table below for information about changes to SigmaWin+.

SigmaWin+ Version 7.42 (upgrade from version 7.40):

#	Item	Category	Description
1	Supported OS	Additions	Windows 11 is now supported.
2	Supported Product	Additions	Σ-MD EtherCAT is now supported.
3	Mechanical Analysis	Additions	<ul style="list-style-type: none"> <li>Up to 10 previous results from performing Mechanical Analysis are now available to be displayed from the history dialog box.</li> <li>Printing superposed graphs is now possible.</li> </ul>
4	Trace	Improvements and Corrections	<ul style="list-style-type: none"> <li>The position of the pre-trigger on the graph is no longer slightly different than the set value.</li> <li>When the pre-trigger set value is changed to 0, the display of the trigger position on the graph now updates to 0 from the previous position.</li> <li>The cursor values are now completely displayed.</li> <li>The batch export destination folder is no longer set to the default value each time (the previous save destination is now retained).</li> </ul>
5	Edit Parameters	Improvements and Corrections	<ul style="list-style-type: none"> <li>The name of PnB24 bits 20 to 24 (SO1 to SO5) now matches the name in the SERVOPACK manual.</li> <li>The name of Pn475 now matches the name in the SERVOPACK manual.</li> <li>PnB02 and PnB04 no longer display as "Reserved".</li> <li>Σ-7 EtherCAT parameter PnB9C is now displayed.</li> <li>Pn50D.0 and Pn50D.3 contents are now correct (applies to SGD V-□□E[S/P]1 models).</li> <li>Pn550 and Pn553 are now displayed (applies to SGD V-□□E[1/2]1 models).</li> </ul>
6	Ripple Compensation	Improvements and Corrections	<ul style="list-style-type: none"> <li>Ripple Compensation is now correctly performed after closing the function with the X button after clicking "Write to Servo". Previously, if closing the Ripple Compensation function with the X button, the SERVOPACK would be in the state before the Ripple Compensation was executed. Note: The related parameter is Pn423.0.</li> <li>When measuring the speed ripple with the Reverse button, the compensation effect of the speed ripple is now improved.</li> </ul>
7	Safety Module	Improvements	Improved the function to clear A.EC0 and A.EC1.
8	Scan	Improvements	An error could be reported when attempting to connect to a SERVOPACK though a controller if Microsoft Visual C++ Redistributable was not installed. The installer now installs this component.

**Title:** SigmaWin+ Version 7 Usage Notes

**Product(s):** SigmaWin+ Version 7.42

**Doc. No.** SigmaWinPlus\_Ver.7

#	Item	Category	Description
9	Setup Wizard	Corrections	<ul style="list-style-type: none"> <li>The Pn20A formula is now correct when a round table mechanical structure is selected with the setting to use a fully-closed encoder. The formula was: "sine wave pitch (cycle) count per load shaft rotation" ÷ "gear ratio" The formula is now: "sine wave pitch (cycle) count per load shaft rotation" × "gear ratio"</li> <li>Σ-7 EtherCAT parameters for electronic gear ratio for a (CoE) communications references SERVOPACK are now correct (was Pn20E and Pn210, is now PnB02 and PnB04).</li> <li>Σ-7 EtherCAT formula for electronic gear ratio is no longer missing "× 1/16" when set to not to use a fully-closed encoder.</li> <li>When the mechanical structure is belt and pulley, and the pulley diameter is set, the pitch formula is now correct (was "pulley diameter" ÷ π, is now "pulley diameter" × π). This is now also corrected for "rack and pinion" and "roll feed".</li> </ul>

**Title:** SigmaWin+ Version 7 Usage Notes

**Product(s):** SigmaWin+ Version 7.42

**Doc. No.** SigmaWinPlus\_Ver.7

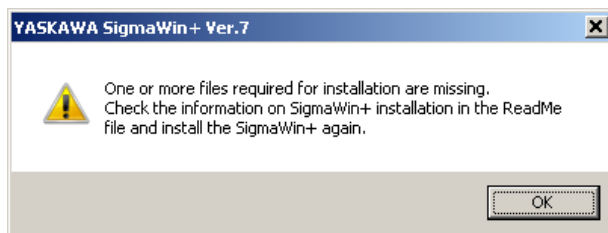
## 6. Installation Troubleshooting

### 6.1. Symptom:

Windows Message:

YASKAWA SigmaWin+ Ver.7

One or more files required for installation are missing.  
Check the information on SigmaWin+ installation in the ReadMe file and install the SigmaWin+ again.



### Causes:

1. The SigmaWinPlus7\_installer.exe file and the AppendFiles folder are not in the same directory.
2. The SigmaWinPlus7\_installer.exe was launched from the SigmaWin+ compressed archive (the archive was not completely extracted).

### Remedy:

Extract the entire contents of the SigmaWin+ compressed archive, preserving the directory structure, and then run the SigmaWinPlus7\_installer.exe executable file. An example of the contents extracted preserving the structure is as follows:

- AppendFiles
- Driver
- NDP462-KB3151800-x86-x64-AllOS-ENU.exe
- SigmaWin+ Ver. 7 Usage Notes [ReadMe file].pdf
- SigmaWinPlus7\_Installer.exe



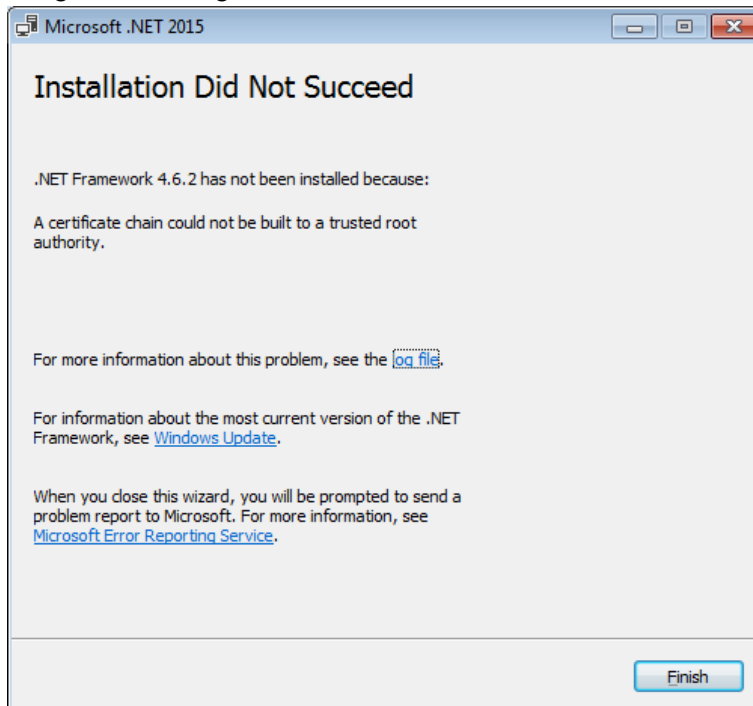
**Title:** SigmaWin+ Version 7 Usage Notes

**Product(s):** SigmaWin+ Version 7.42

**Doc. No.** SigmaWinPlus\_Ver.7

## 6.2. Symptom:

Program Message: Microsoft .NET 2015: Installation Did Not Succeed



## Cause:

The above error may result when installing .NET Framework 4.6.2 if the operating system is Windows 7 SP1, and the computer is offline, or in an environment where updates cannot be downloaded and installed from Windows Update.

## Remedy:

Download and install the certificate to install .NET Framework 4.6.2 successfully.

Refer to: <https://blogs.msdn.microsoft.com/jpvsblog/2016/10/04/ndp462-offline-install/>

**Title:** SigmaWin+ Version 7 Usage Notes

**Product(s):** SigmaWin+ Version 7.42

**Doc. No.** SigmaWinPlus\_Ver.7

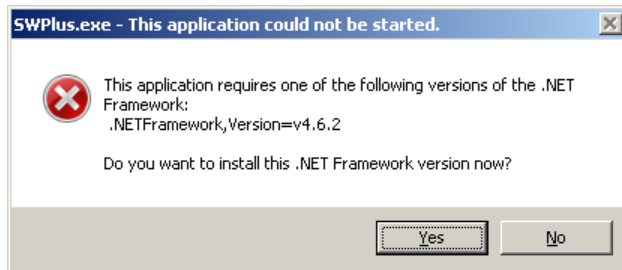
## 7. Program Launch Troubleshooting

### 7.1. Symptom:

Windows Message:

SWPlus.exe – This application could not be started.

This application requires one of the following versions of the .NET Framework: .NET Framework,Version=v4.6.2  
Do you want to install this .NET Framework version now?



### Cause:

When launching SigmaWin+, if the .NET Framework 4.6.2 is not installed, the error message will appear.

### Remedy:

Install the .NET Framework 4.6.2 as described in [3. Installation Instructions](#).

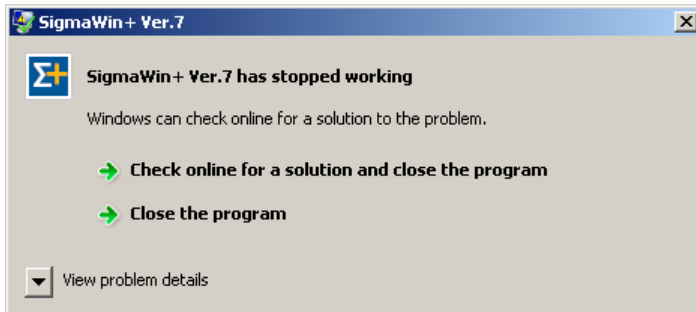
**Title:** SigmaWin+ Version 7 Usage Notes

**Product(s):** SigmaWin+ Version 7.42

**Doc. No.** SigmaWinPlus\_Ver.7

## 7.2. Symptom:

Windows Message: SigmaWin+ Ver.7: SigmaWin+ Ver.7 has stopped working



## Cause:

When launching SigmaWin+, if KB2999226 (Update for Universal C Runtime) is not present. This software is a requirement for SigmaWin+.

## Remedy:

Install KB2999226 as referenced in [1. System Requirements](#).

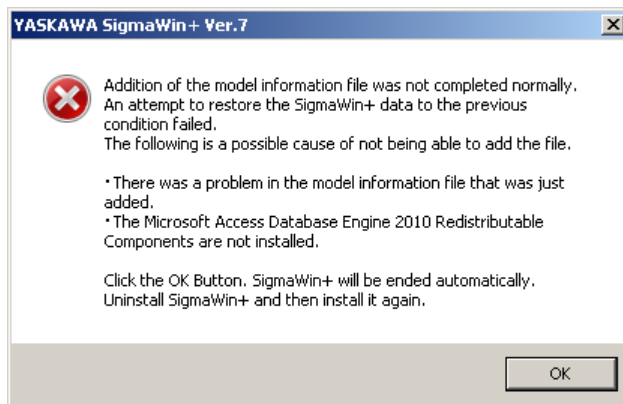
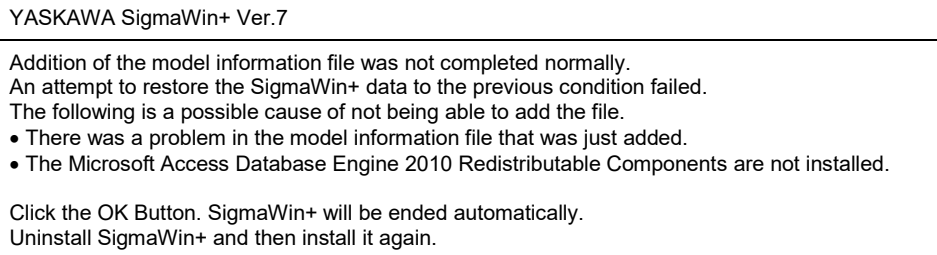
**Title:** SigmaWin+ Version 7 Usage Notes

**Product(s):** SigmaWin+ Version 7.42

**Doc. No.** SigmaWinPlus\_Ver.7

### 7.3. Symptom:

Program Message:



### Cause:

The model information file database could not be compiled by Microsoft Access Database components because:

- A) The Microsoft Access Database Engine 2010 was removed or was not installed automatically by SigmaWin+. Refer to [4. Additional Installation Notes](#) for details on the Microsoft Access Database Engine 2010 that SigmaWin+ automatically installs.
- B) The Microsoft Access Database Engine that exists on the computer cannot be used by SigmaWin+.

**Title:** SigmaWin+ Version 7 Usage Notes

**Product(s):** SigmaWin+ Version 7.42

**Doc. No.** SigmaWinPlus\_Ver.7

**Remedy:**

1. Reinstall SigmaWin+. If problems still occur, install the Microsoft Access Database Engine before installing SigmaWin+. The Microsoft Access Database Engine can be obtained from Microsoft.

2. Follow the steps described in the Solution Center regarding this Issue.

<https://solutioncenter.yaskawa.com/selfservice/viewdocument.do?externalId=12916>

**Title:** SigmaWin+ Version 7 Usage Notes

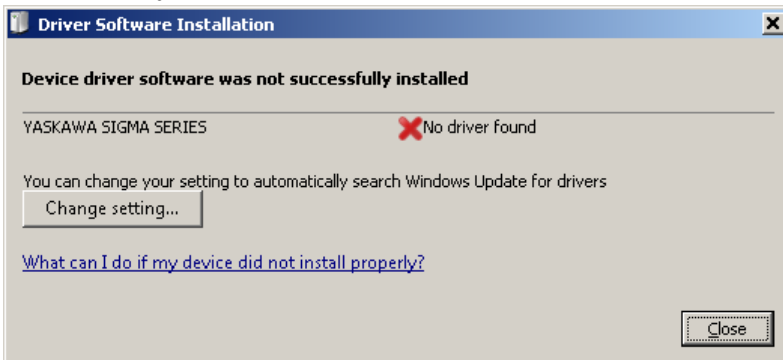
**Product(s):** SigmaWin+ Version 7.42

**Doc. No.** SigmaWinPlus\_Ver.7

## 8. Program Usage Troubleshooting

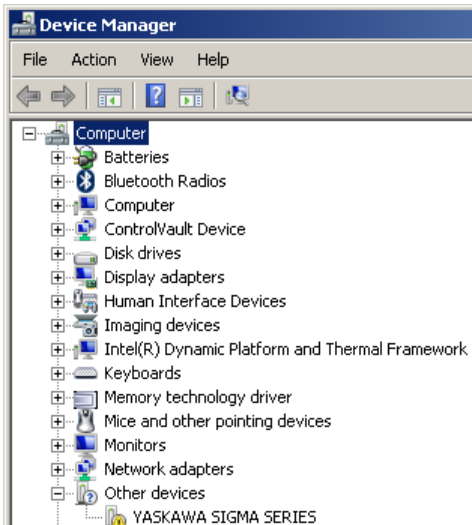
### 8.1. Symptom:

Windows Message: Driver Software Installation: Device driver software was not successfully installed



OR:

“YASKAWA SIGMA SERIES” appears in Device Manager in the category “Other devices”



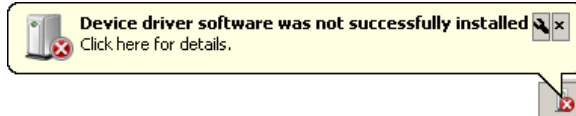
**Title:** SigmaWin+ Version 7 Usage Notes

**Product(s):** SigmaWin+ Version 7.42

**Doc. No.** SigmaWinPlus\_Ver.7

OR:

“Device driver software was not successfully installed” appears in the Windows system tray.

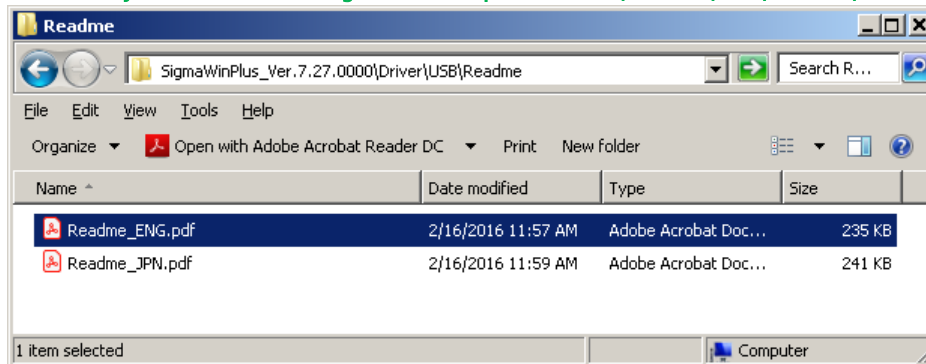


### Cause:

When connecting a SERVOPACK to the computer with a USB cable, the Windows message appears. The USB driver for the SERVOPACK is not installed.

### Remedy:

Install the USB driver for the Sigma Series SERVOPACK. Instructions are found at: [<Directory of extracted SigmaWin+ .zip archive>\Driver\USB\Readme\Readme\\_ENG.pdf](#)



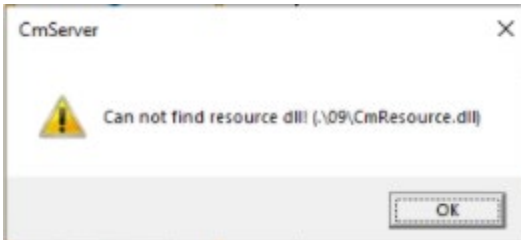
**Title:** SigmaWin+ Version 7 Usage Notes

**Product(s):** SigmaWin+ Version 7.42

**Doc. No.** SigmaWinPlus\_Ver.7

## 8.2. Symptom:

SigmaWin+ Message: CmServer: Can not find resource.dll! (.\09\CmResource.dll)



## Cause:

SigmaWin+ did not install the Microsoft Visual C++ Redistributable.

## Remedy:

Install the Microsoft Visual C++ Redistributable found at:

<Directory of extracted SigmaWin+ .zip archive>\ISSetupPrerequisites\vc\_redist\_x86.exe

Alternatively, obtain and install the **X86 version** from Microsoft:

<https://docs.microsoft.com/en-us/cpp/windows/latest-supported-vc-redist?view=msvc-170>

Architecture	Link	Notes
ARM64	<a href="https://aka.ms/vs/17/release/vc_redist.arm64.exe">https://aka.ms/vs/17/release/vc_redist.arm64.exe</a>	Permalink for latest supported ARM64 version
X86	<a href="https://aka.ms/vs/17/release/vc_redist.x86.exe">https://aka.ms/vs/17/release/vc_redist.x86.exe</a>	Permalink for latest supported x86 version
X64	<a href="https://aka.ms/vs/17/release/vc_redist.x64.exe">https://aka.ms/vs/17/release/vc_redist.x64.exe</a>	Permalink for latest supported x64 version. The X64 Redistributable package contains both ARM64 and X64 binaries. This package makes it easy to install required Visual C++ ARM64 binaries when the X64 Redistributable is installed on an ARM64 device.



**Note:** The X64 version does not resolve this issue.



**Title:** SigmaWin+ Version 7 Usage Notes

**Product(s):** SigmaWin+ Version 7.42

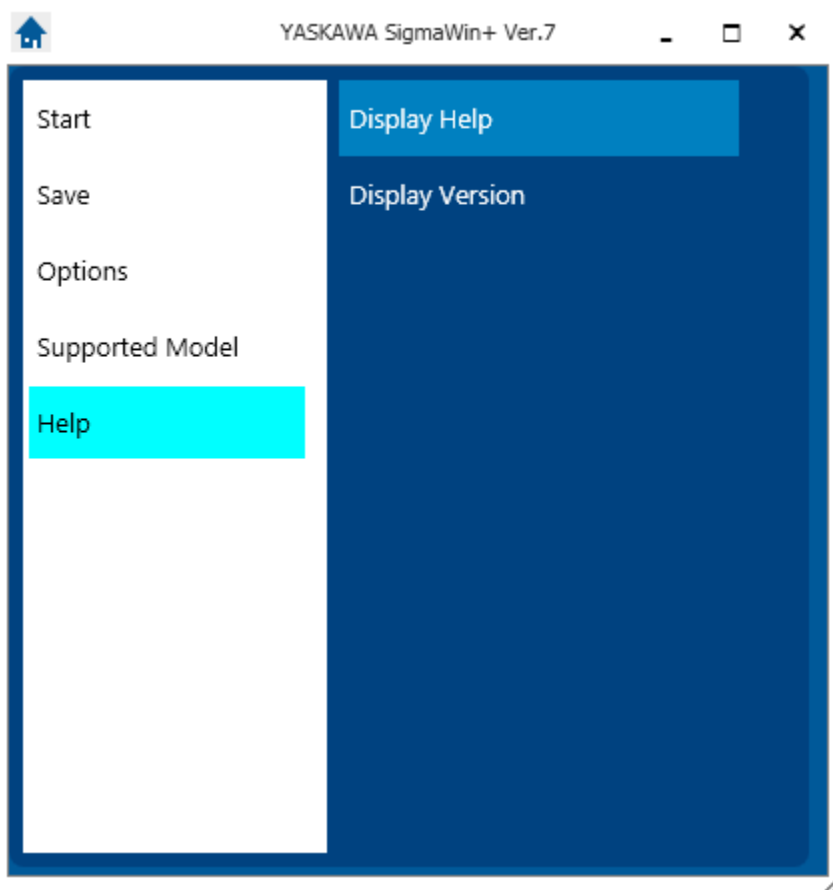
**Doc. No.** SigmaWinPlus\_Ver.7

### 8.3. Symptom: (All other symptoms not described in this document)

**Remedy:**

Refer to SigmaWin+ Help.

The Help can be found by launching SigmaWin+ and selecting the menu as shown:



Alternatively, the help file can be viewed in an HTML5-compatible browser.

The default location of the help file is at:

[c:/Program Files \(x86\)/YASKAWA/SigmaWinPlus7/Help/sigmawin7Help.html](c:/Program Files (x86)/YASKAWA/SigmaWinPlus7/Help/sigmawin7Help.html)

**Title:** SigmaWin+ Version 7 Usage Notes

**Product(s):** SigmaWin+ Version 7.42

**Doc. No.** SigmaWinPlus\_Ver.7

If SigmaWin + is not yet installed, the help file can be accessed by extracting the archive and viewing the HTML file.

The help file archive is located at:

<Directory of extracted SigmaWin+ .zip archive>\SIETS80000134\*.zip

Note: \* denotes wildcard